

GLÖTZL Baumeßtechnik

DIPMETER Standard Dipmeter with Temperature Display

Type: WL . . .
Art. No.: 86. . . .

Dipmeters are used for simple recording of a water level referred to a surface reference point. The measuring cable is graduated in black for centimeters and in red for meters. As soon as the dipmeter is submerged in water, the red signal diode is flashing and the buzzer in the cable reel is signaling the water contact. By light lifting of probe, the signals are going out so that the switch actuation point which is equal to the water level can precisely be determined. Due to the very low power requirement by the automatic start and stop function of the instrument, the operating time will be one year or more according to the application frequency. Besides the standard version, also a model with integrated temperature indication is available. The temperature indication is done automatically after approx. 10 seconds of water contact. For measurements outside of water, e.g. for air temperature measurement, the unit can be started by a push-button. After 30 seconds, the unit is automatically switched off.

Cable Reel:

Steel frame with plastic reel for measuring cable and integrated electronics.

Measuring Cable:

Plastic flat cable with two cable strands and three Kevlar cores for high-tensile strength; graduation in centimeters.

Plumb:

Manufactured of brass, chromium-plated, with electrode, strain relief and buckling protection for measuring tape, Ø16 mm.

Current Supply:

Commercially approved 9 V block batteries

Delivery Volume:

Complete operative units with measuring lengths of 15 up to 200 m; specific measuring lengths on request.

Model with Temperature Indication:

3 ½ digit temperature indication LCD
Temperature indication $-5\text{ }^{\circ}\text{C}$ up to $+70\text{ }^{\circ}\text{C}$
Resolution $0.1\text{ }^{\circ}\text{C}$
Measuring accuracy $\pm 0.3\text{ }^{\circ}\text{C}$

Application Ranges:

Measurements of water level and temperature in:
Observation levels – Borings – Wells
Caverns and galleries – Bodies of water – Containers

Dipmeters, article numbers and cable lengths:

Cable lengths [m]	Art. No.:	15	30	50	100	150	200
Dipmeter standard	86.01	.01	.02	.03	.05	.06	.07
Dipmeter with temperature display	86.01	.21	.22	.23	.25	.26	.27

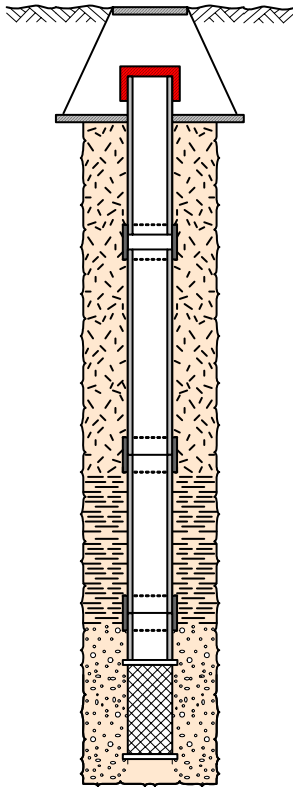
Dipmeter standard model



Dipmeter with integrated temperature indication



System of a standard water level



Surface

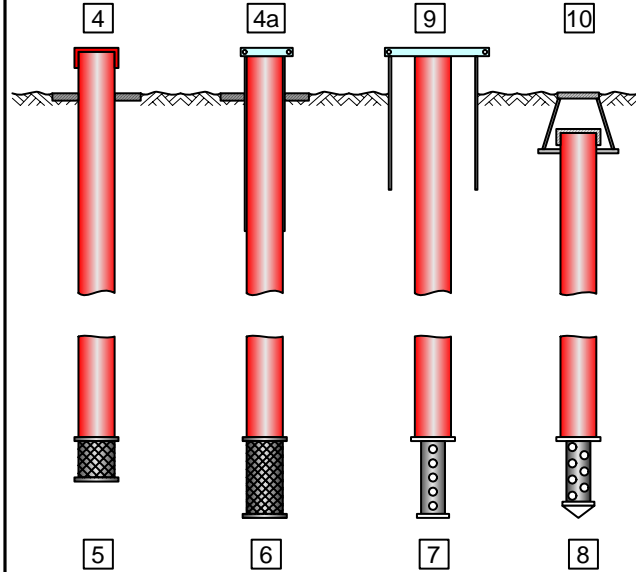
Street prot. cap **10**Screw cap **4**

Concr. plate

Meas. tube of PVC
w. telesc. bushing
NG 4 / 5 / 6,3 **2**Meas. tube of PVC
w. screw bushing
NG 4 / 5 / 6,3 **1**Filling: Sand,
gravel, insulating
material etc.Sealing: Clay, clay
balls, expand. clay,
bentonite etc.Filter tips in different
types filled with fine-
grained gravel

P086SB01.vsd

Head-point type in filter

**4** Meas. tube with end cap of PVC**4a** Head tube 2", closing cap with key 2 m long**9** Protection tube heavy-type,
closing cap with key 1.5 m long**10** Street cap for subsurface installation for
pavements/roadways DIN 4055

P086SB02.vsd

Assembly:

On one side, the measuring tubes have an external thread and on the other side a screw bushing or telescopic bushing with internal thread. All parts can be screwed together without any tools. To avoid penetration of pollution, the protection caps must be attached.

Article numbers for order of measuring tubes and accessories:

Meas. tubes PVC, NG [outer Ø in cm]			NG 4	NG 5	NG 6,3
			Ø 40x3 mm	Ø 50x3.5 mm	Ø 63x7 mm
1	Meas. tube w. screw bushing	each 2.5 m	89.01.01	89.10.01	89.20.01
1a	Screw/adhes. bushing f. shortening		89.01.13	89.10.13	
2	Meas. tube w. telescopic bushing	each 2.5 m	89.01.02	89.10.02	89.20.03
3	Closing cap of PVC for base		89.01.11	89.10.11	89.20.11
4	Screw-/end cap of PVC for head point		89.01.12	89.10.12	89.20.12
4a	Head tube 2", closing cap with key 2m long				
5	Ceramic filter in cylindrical form	Ø 50x120 mm	89.60.01.01	89.60.01.01	89.60.01.01
6	Ceramic filter in cylindrical form	Ø 50x250 mm	89.60.01.03	89.60.01.03	89.60.01.03
7	PVC tube with plastic filter	Ø 25x250 mm	89.60.10.01	89.60.10.01	89.60.10.01
8	Injection tube with plastic filter	Ø 25x250 mm	89.60.20.01	89.60.20.01	89.60.20.01
9	Protection tubes heavy-type 6" , length 1.5 m with closing cap			89.40.01	
10	Street cap with subsurface head point DIN 4055			60.01.04.31	

Subject to technical alterations!